

When is a pig fit for transport?

Tina Birk Jensen, Veterinarian, Danish Pig Research Center

Good animal welfare Throughout life

- **Licence to produce**
- Worry about fitness for transport
- Need for guidelines



Significant focus on fitness for transport



DVFA:
New guide
Days of learning

www.fvst.dk



SEGES:
Information
posters

www.svineproduktion.dk

Assesment of fitness for transport

It is the farmer who has the primary responsibility to assess, whether a pig is fit or unfit for transport

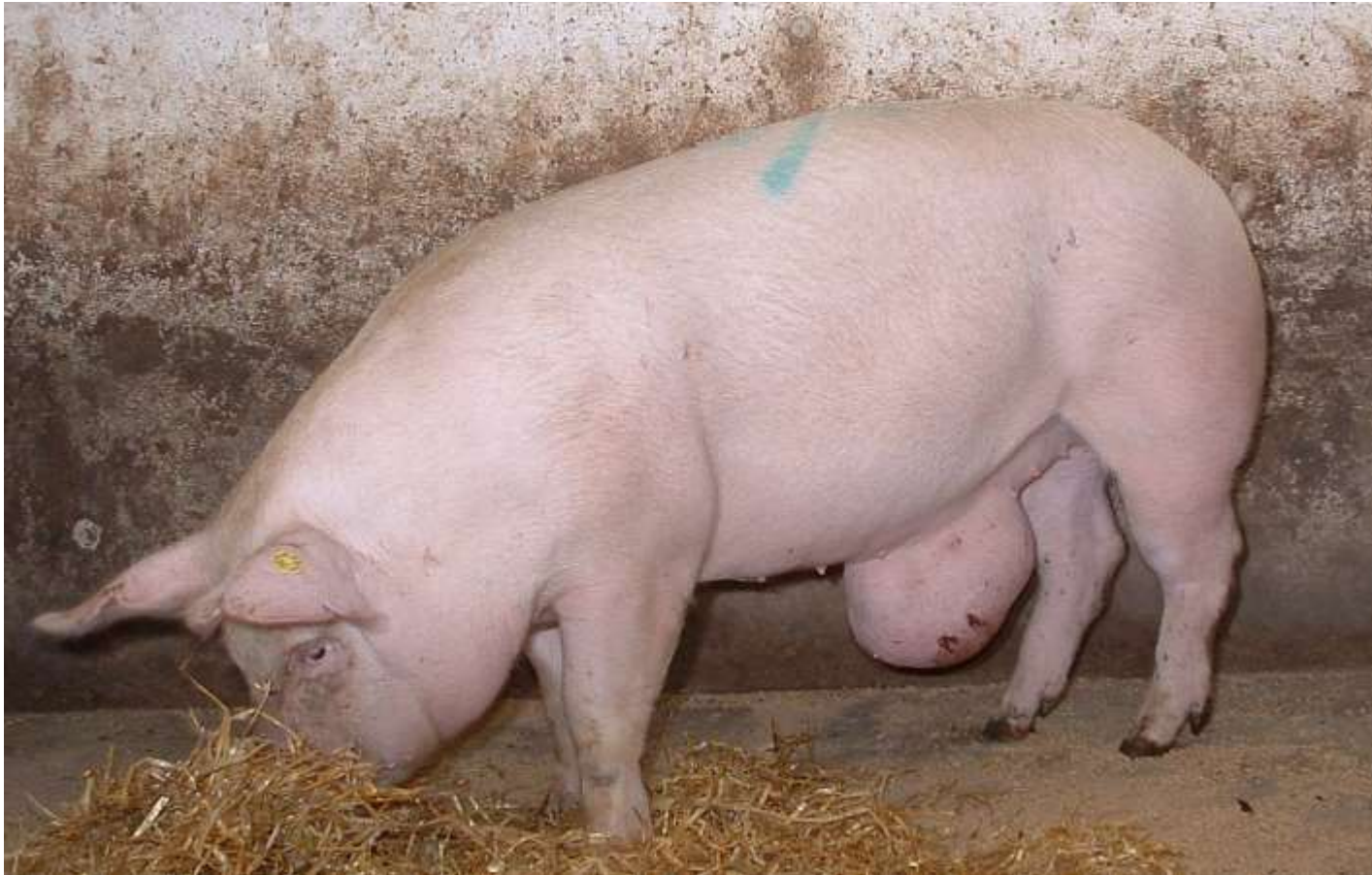


ASSESSMENT OF FITNESS FOR TRANSPORT



Hernias

When is the pig fit for transport?



BROK TRANSPORTEGNET ELLER EJ? SLAGTESVIN, 100 KG



Hvad skal du gøre for transporten?

- 1. Sæt fokus på hele grisen**

SE EFTER

 - a) Er grisen i ro?
 - b) Hvordan er grisen båret?
 - c) Kan grisen gå normalt?
 - d) Er grisen bevægelssvækket pga. broksækken?
- 2. Se på broksækken**

SE EFTER

 - a) Hvor stor er broksækken?
 - b) Hvor tæt er broksækken bundet?
 - c) Kan man broksækken på hovedet?
 - d) Ser der ud på broksækken?
- 3. Mærk på broksækken**

MARKER EFTER

 - a) Marker der ud på broksækken?
 - b) Føltes broksækken varm?
 - c) Er broksækken med bærings?



Hernias

Fit for transport



- Finishers with small hernias (less than 15 cm) without wounds and with unaffected general conditions and normal, unimpaired movements
- Finishers with small hernias (less than 15 cm) with very superficial scratches and unaffected general conditions and normal, unimpaired movements

Hernias

Unfit for transport



- Finishers with small or large hernias with affected general conditions, motor impairment (including kicking, or stepping on the hernias) or complications (e.g. pain, heat, wounds)

Hernias

Transport under special conditions



Finishers with large hernias without wounds:

- Separated from healthy animals
- Maximum of 5 animals in each cubicle- with a veterinary statement
- Extra space in the cubicle and suitable bedding
- Directly to the slaughterhouse, i.e. not for export, markets or the like

Hernias

When is the pig fit for transport?



Is the pig off colour?
How is the pig's body condition?
How is the pig's movement?



How big is the hernia?
How is the shape of the hernia?
Does the hernia touch the floor or the pig's leg during movement?
Does the hernia have visible wounds?



Is it possible to feel any wounds on the hernia?
Does the hernia feel warm?
Is the hernia tender or sore?

Hernias

Fit for transport?



The pig is in good health, with a normal walk and has a normal body condition



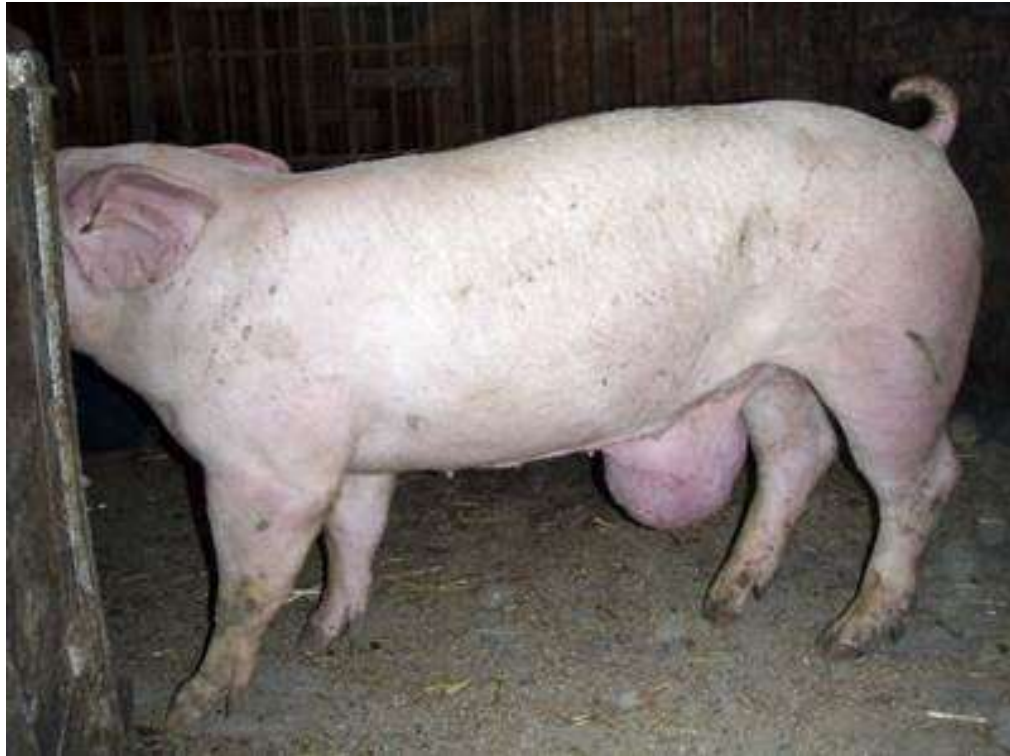
The hernia is less than 15 cm
The hernia does not touch the floor

The hernia is neither tender nor sore
The hernia does not have any noticeable wounds

FIT FOR TRANSPORT

Hernias

Fit for transport?



The pig is in good health, with a normal walk and a normal body condition



The hernia is larger than 15 cm
The hernia does not touch the floor
The hernia has a visible scar

The hernia is neither tender nor sore
The hernia does not have any noticeable wounds

FIT FOR TRANSPORT UNDER SPECIAL CONDITIONS

Hernias

Fit for transport?



The pig is in good health, with a normal walk and a normal body condition



The hernia is less than 15 cm
The hernia does not touch the floor
The hernia has a visible wound underneath it

The hernia is neither tender nor sore
The hernia has a noticeable wound underneath it

UNFIT FOR TRANSPORT

Wounds on hernias

Why unfit for transport?



Wounds on the hernias

What can we do in the herd?

- Look at the animals and prevent the wounds
- In a sick pen with a soft and dry bedding



Tail bites

When is the pig fit for transport?





HALEBID TRANSPORTEGNET ELLER EJ? SLAGTESVIN, 100 KG

Hvad skal du gøre før transporten?

- 1. Sæt fokus på hele grisen**

SE EFTER

 - a) Er grisen aktivt?
 - b) Hvordan er grisen i helb?
 - c) Kan grisen gå normalt?
- 2. Se på grisens hale**

SE EFTER

 - a) Kommer grisen i helb?
 - b) Ser der frisk blod på halen?
 - c) Hvis skadet er åbent på halen?
 - d) Er halen rød og/eller tryk?
 - e) Er der et hul på halen samt varm lugt på vævsdel?
- 3. Mærk på grisens hale**

MÆRK EFTER

 - a) Føles halen varm?
 - b) Er halen rød og/eller tryk?
 - c) Mærkes halen forsvulmet?



Tail bites

Fit for transport



- Healed tail bites
- Tail bites with minor, superficial wounds in the skin (without affecting underlying tissue)
- Tail bites with a dry scab without any signs of **heat**, **pain**, **swelling** or **redness** in the tail

Tail bites

Unfit for transport



- Finishers with affected general conditions
- Finishers with signs of **heat**, **pain**, **swelling** and **redness** of the tail
- Tail bites with complications (e.g. tissue death, suspicions of spreading of bacteria to bones and joints, infections in bones etc.)
- Large wounds around the base of the tail, where the tail is missing or with tissue death = never fit for transport

Tail bites

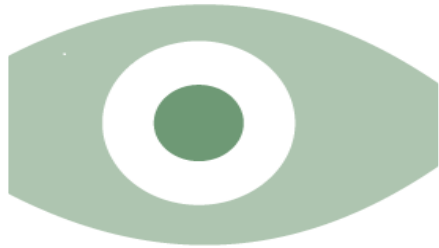
Fit for transport under special conditions



- Tail bites that are not completely healed and have wounds that involve underlying tissue. **No heat, pain, swelling or redness in the tail bite.** No signs of spreading to bones and joints
 - Separated from healthy animals
 - Extra space in the cubicle and suitable bedding
 - Directly to the slaughterhouse, i.e. not for export, markets or the like

Tail bites

When is the pig fit for transport?



Is the pig off colour?
How is the pig's body condition?
How is the pig's movement?



Does the pig hide its tail?
Has the tail noticeable fresh blood on it?
How big is the wound on the tail?
Is the tail red and/or thick?
Are parts of the tail black?



Does the tail feel warm?
Is the tail tender or sore?
Does the tail feel swollen?

Tail bites

Fit for transport?



The pig is in good health, walks normally and has a normal body condition



The tail bite is not completely healed
No signs of redness or swelling

The tail does not feel warm, tender, sore or swollen

FIT FOR TRANSPORT UNDER SPECIAL CONDITIONS

Tail bites

Fit for transport?



The pig is in good health, walks normally and has a normal body condition



The tail bite is not completely healed
Redness and swelling of the tail

The tail feels warm, red and swollen

UNFIT FOR TRANSPORT

Tail bites

Fit for transport?



The pig is in good health with a normal body condition and movement



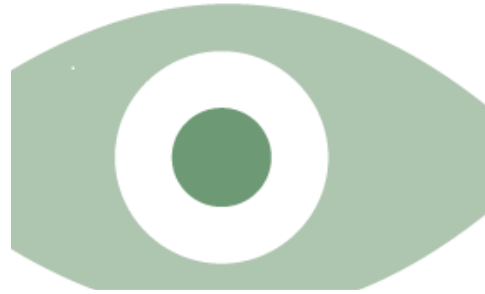
The tail bite is not completely healed
Tissue death at the tip of the tail

The tail does not feel warm, tender or swollen

UNFIT FOR TRANSPORT

Evaluating fitness for transport

Primarily the farmer's responsibility



Look at
the
entire pig



Look at
the
problem



Feel the
problem

To be continued...

Currently, we are working on new information posters

Lameness



Ear lesions



Questions?

